

# BULLETIN

Issue 240

March 1998

Price £1

The News Bulletin of the  
**SOUTHERN COUNTIES CHESS UNION**

Published September, November, January, March, May and July

**Editor:** RJ Haddrell, 48 Southview Rd, Tunbridge Wells, Kent TN4 9BX: tel (and fax) 01892 532361; email rjh@thefree.net. All enquiries, orders and copy to the Editor. Copy deadline, not guaranteed flexible, is the 15th of the month of publication.

**Subscriptions:** Annual subscriptions run from September, price £6. Part-year subscriptions pro rata. Single issues are sold at the cover price. Back numbers are usually available.

<b>Grading Lists 1997: prices: -</b>	<b>By post</b>
SCCU List, 10+ games in last 3 seasons	£4.00 (£3.80 discount*)
BCF List: all English players, 10+ games	£11.00 (Direct Members £8.50)
BCF Rapidplay List November	£2.50 (DM £2.25)

\* SCCU Discount rate is for orders of 5 or more SCCU Lists to be posted to the same address.

**If collecting,** deduct 40p post / packing for each copy other than Rapidplay. (Telephone first.)

Orders to CI Howell, 28 Fowler Close, Maidenbower, Crawley, W Sussex RH10 7UN 01293 885176

All prices include postage and packing as appropriate. Make cheques payable to SCCU.

**SCCU OFFICERS**

President	JA Philpott, 50 Cranston Gardens, Chingford, London E4 9BQ 0181 527 4063
Deputy President	
Secretary	RJ Haddrell, 48 Southview Rd, Tunbridge Wells, Kent TN4 9BX 01892 532361
Treasurer	WA Suttill, 7 Lonsdale Rd, London W11 2BY 0171 229 9750 (do not ring after 9 p.m.)
Grading Secretary	CI Howell, 28 Fowler Close, Maidenbower, Crawley, W Sussex RH10 7UN 01293 885176
County Match Controller	DR Sedgwick, 23 Tierney Court, Canning Rd, Croydon CR0 6QA 0181 656 7682
Individual Tournament Sec	FC Manning, 44 Willow Rd, Wallington, Surrey SM6 0PF 0181 647 0063
Fixture Secretary	FC Manning
Junior Organiser	NW Dennis, Boundary House, 230 Greys Rd, Henley on Thames, Oxon RG9 1QY 01491 576052
Curator of Equipment	FC Manning
Bulletin Editor	RJ Haddrell
Match Captain	RCN Lee-Anderson, 18 Longton Grove, Sydenham, London SE26 6QE

**SCCU EXECUTIVE COMMITTEE**

The Executive Committee consists of the Officers, plus the following County Delegates (or their deputies).

Berks	WG Ward, 77 Greenwood Rd, Crowthorne, Berks RG45 6JS 01344 775901
Bucks	JT Melsom, 2 Chiltern View, Saunderton, High Wycombe, Bucks HP14 4HX 01494 562306
Cambs	MA Ferguson, Queens College, Cambridge (home: Gooserye Lodge, Beech Rd, Haslemere, Surrey GU27 2BX)
Essex	R Watts, 35 Parkland Avenue, Upminster, Essex RM14 2EX 01708 221717
Herts	C Lean, 47 Benslow Lane, Hitchin, Herts SG4 9RE 01462 433248
Kent	NC Mackett, 16 Clare House, Lesley Place, Maidstone ME16 0UE 01622 726079
Middx	C Fewtrell, 77 Byron Way, Northolt, Middx UB5 6AZ 0181 723 8028
Oxon	LR Millin, 12 Rowell Drive, Begbroke, Oxford OX5 1SE 01865 376634
Surrey	WE Waterton, 14 Woodfield Gardens, New Malden, Surrey KT3 6DZ 0181 949 0654
Sussex	RD Hirsch, 5 Orde Close, Pound Hill, Crawley, W Sussex RH10 3NG 01293 883244

Life Vice-Presidents: JJ Lauder, Grace Lodge, 4 Manor Rd South, Hinchley Wood, Surrey

HM Cath, 6 Northwood Avenue, Purley, Surrey CR8 2EP

Auditor: SG Hill, 48 Maywater Close, Sanderstead, Surrey CR2 0ES 0181 657 4552

Facts we try to get right. Opinions, unless otherwise attributed, are the Editor's.

## EDITORIAL

Can't believe it's six months since I wrote an Editorial. You're getting self-effacing, Richard. Time for another. This season's SCCU county competitions, just completed, have been amazingly close-fought. I don't just mean the Open, where going into the final round only one team was assured of nomination (and there were three places). Final round elsewhere was humorously full of possibilities. In the U125 it *could* have given us a quadruple tie for second place, and the side that actually came second would have been bottom. Naturally, it was also possible for them to be first. Last match in the U100, unfortunately defaulted in the end, might have done almost anything. I admit the U150 doesn't quite fit the pattern, and Essex messed it up good and proper in the U175, but it's been an exciting end to the season and I'm glad we have grading limits now. To put it another way, for those who inconsiderately remember my first thoughts on the subject: I'm glad, now, that we have grading limits. Who knows, with the BCF's agreement we may even get them in the Minor Counties in a year or two.

## LETTERS TO THE EDITOR

Dear Mr Haddrell,

15.2.98

Probably not the correspondent from Oxon you were expecting, but I was provoked (as you hoped someone would be) by your gloss on Mick Croft's letter (January Bulletin) about Minor Counties.

In my view, Oxon's success in the Minor Counties event has been the result, more than anything, of hard work and determination from our county captains (Dave Hackett last season and, earlier in the decade, Dave Metcalfe).

The number of players available to an Oxfordshire captain is quite small, as I believe the following figures<sup>1</sup> will show:

1996 to 1997 season			
Grade band	players	Grade band	players
210-220	2	180-189	5
200-209	3	170-179	11
190-199	4	160-169	8
Total: 33 players			

<sup>1</sup> I have included Oxford League players who never play for the county, but have excluded Oxford University players who have never shown an inclination to represent Oxon.

The average grade of Oxon teams in the Open section last season was 177, compared with 182.3 in the Minor Counties. I should imagine most counties would be able to field stronger teams for a few matches, with a national prize to play for.

The data below shows Oxon's performance in the Minor Counties last season. As a grader, the results interest me quite a bit, because they suggest either that Oxon players are super-heroic, or that they are undergraded.

Avg Oxon grade	Opponents & avg grade	Expected result	Actual result
181	Suffolk 175	9-7	12½-3½
181	Dorset 166	10½-5½	12-4
186	Herts 190	7½-8½	9-7

Having played for Oxon for many years - in the old Championship and the current Open events - I have no doubt that we should count as Minor within an SCCU context.

Would it not be sensible to establish a mean grade requirement for the Minor Counties, and for qualifiers from the SCCU (and other strong Unions if appropriate) to have to abide by this? In practice this would discommode only a very few players who might have to be excluded in the national stages, and would give a county like Oxon something to play for - an incentive the team hasn't had this season.

Yours sincerely,

RAY STARKIE

Oxford

Ed: - I agree about mean grades, and so does the SCCU Executive. Only I'd do it at the Union stage as well (between counties self-declared as Minor). The next correspondent suggests a different approach to this idea.

Dear Mr Haddrell,

18.2.98

As a veteran of county chess, but only a fairly new appointment as a team captain, I have recently made two discoveries: first, the very existence of your excellent bulletin, and second, the very arbitrary nature of qualification of a county for the Minor Counties Championship. Whereas it is obvious what is being achieved by winning the Open Counties Championship, or any of the five graded sections, one could not say the same about the Minor Counties.

I believe that any county that does not stand a reasonable chance of winning its Union championship should be eligible for the Minor Counties. If you exclude the "stronger" Minor Counties, you give them nothing to play for. For example, this season, Cambs/Essex/Kent/Sussex have won all their fixtures against the other 5 competing counties, often by big margins. By excluding stronger Minor Counties, you would merely create a new tier of average Minor Counties competing for an even more dubious prize against the weakest counties.

I also do not agree with comments that last season's Minor Counties was competed by over-strength teams. The recent Herts v Surrey match (the result of which is enclosed with this letter) shows both teams with an average grade of over 187! If Minor Counties were only allowed to field teams with an average grade of, say, 175, the net result would be that the top players of some Minor Counties teams would be unable to represent their county, and perhaps seek allegiance with another county.

My suggestion for a fair Minor Counties tournament would be to allow each county to play its strongest side, but in fixtures between Minor Counties (and for the purpose of the Minor Counties championship only - not the Open) to handicap a team whose average grade is above 175. The penalty could perhaps be 1 game point for each 50 grading points by which the stronger team's aggregate grade exceeds 2800 (= 16 x 175) or the weaker team's aggregate grade if higher. For this purpose, to avoid the inclusion of lightweight players, the grade of any player under 150, or defaulted board, would be taken as 150. The result needed to win the match would therefore be calculable and determined at the start of the match.

Yours sincerely,  
KEVIN R CLARK

Royston

### SCCU EXECUTIVE COMMITTEE

The Executive met on Friday 13th March 1998 at the Durham Castle W1. Seventeen of the eighteen members were there, the eighteenth was not a county rep, and it was a very much better-humoured meeting than the next one down sounds to have been. Main points, in more or less chronological order:

- (1) SCCU Council Meeting 1998 will be on Saturday 27th June.
- (2) A volunteer has been found to take over as SCCU County Match Controller when David Sedgwick retires at the end of this season. Not sure that the Bulletin should name him, but he's well qualified and he's not currently on the Executive. There, we've revealed his sex.
- (3) BCF office had been broken into a few days before the meeting. Computers and a fax machine were stolen. They were insured and the data was backed up; delays will have been inevitable but by the time you read this they *should* be fully operational again.
- (4) BCF Policy Unit was to propose a radical change: see "BCF Policy Unit" on page 3. This was a recent development and we had seen nothing in writing.
- (5) Treasurer said all counties were paid up. He can't always say as much by March.
- (6) County Match Controller said there had been no major problems but he mentioned a few things; like, someone had objected to Bognor as a county match venue (complaint not upheld); and Herts had gone on playing their champion on board 1 (complaint not received). He regretted Kent's recent default against Sussex in the U175.
- (7) Junior Organiser said there no longer seemed to be a marked divide between our Major and Minor counties at U18 level. At the recent SCCU Jamborees there had been an overlap in terms of mean grade; and the two strongest players had been in the Minor Counties. He proposed to have a single combined jamboree next year.
- (8) SCCU Individual Championship 1998-9 would be at the Sutton Easter Congress; BCQ places Maidstone, Sutton, Southend.
- (9) BCET School Shield nomination was decided, but we never say who it was until the award's official. (We *are* allowed two nominations. Last year we made one and it was the only nomination there was. It got an award.)
- (10) Restructuring of Union. Some felt, in view of the Policy Unit's ideas (see below, again), that it might be best to put this on hold till we knew what was happening. Most disagreed. After considerable discussion, largely on ways of not swamping the Executive, the following straw polls were held. (a) What should be the rights of representation at Council? Counties two reps, other organisations one. (b) Should other organisations pay half the County membership fee? Yes. (c) Should each County have an automatic representative on the Executive? Yes, by a fair majority. (Such reps would not be Council reps *in addition* to the two mentioned under (a)). (d) Should each other organisation have one? No, by a large majority. (e) How many places should there be for them? Opinion was divided between four and five maximum. (f) Should there be two Council Meetings a year, to give other organisations a fairer crack of the whip? NO.

It was agreed that we should not propose to change the Union's name.

A sub-committee will work on the detailed draft of constitutional changes and bring it back to the Executive at the next meeting. It was thought important to present a draft to this year's Council Meeting.

- (11) BCF County Match Rules. The BCF had mooted some changes, to come before Council in April. Their suggestions, and Executive reactions: (a) Minor Counties. Proposed: no team to be admitted which has reached the BCF stage of the Open in the preceding two seasons. Agreed. Proposed: no team to be admitted which has finished in the top half of its Union Open competition in the current season. Not agreed; it could give teams an incentive to lose matches. (It was thought that the BCF had already taken this on board.<sup>1</sup>) We would prefer a limit on mean grade in the BCF stage. (b) All divisions. Proposed: a Union to have two nominees as of right, in any division, if at least three teams have completed their fixtures in its Union-stage competition; and three nominees if at least seven have completed their fixtures. The Executive had sympathy with this but was uneasy about the possibility of too many preliminary-round matches. Maybe the three and the seven were too low. (Especially, perhaps, if a Union competition is not all-play-all?) We would tell the BCF our opinions.

(12) National Finals 1997-8 (Counties Championship and Nat Club). The Executive had reservations about the venue. It's at Ratcliffe (where?) near Syston (where?) in Leicestershire. The Executive's reservations were based not on its ignorance of the topography of Leicestershire, but on the remoteness of Ratcliffe from railway stations and hotels. Three miles and six miles, respectively. In the BCF's defence the Bulletin has to say that the venue, or at any rate one called Syston Leics, has been used as a mid-way venue in semi-finals more than once in the last few years, by SCCU teams, and without apparent reluctance. This is an answer, of sorts, to the railway objection; it's not an answer to the hotel one.

<sup>1</sup> That's what we thought. It later emerged that the BCF's "top-half" proposal would, in fact, be put to Council. The SCCU will therefore have counter-proposals on the agenda suggesting a mean-grade limit.

The Bulletin has been musing about matches which both sides want their opponents to win. (It's possible.) Clearly, you need to field your strongest side. The aim, for each player, will be to establish an advantage so overwhelming that he can force his opponent to checkmate him. Up to a point, play will be normal. Well, sort of. Attacks that win material are fine. Attacks that force checkmate or win of material are useless, because your opponent will just hang on to the material and let you mate him. Some modifications to the rules will be needed. Resignation will count as a win; and defaults, or any form of unacceptable behaviour, will be penalised by win of the game.

It was left to DRS to suggest the obvious and prosaic un-problemist alternative: play the match normally, but with a previously agreed and notarised undertaking to report all the results backwards. It is interesting that, either way, you *do* need to field your strongest team. And either way, it is recommended that the match should not be graded.

### BCF MANAGEMENT BOARD

An SCCU representative reports:

The Management Board met on 14 February from 11 a.m. to 6 p.m. The meeting was relatively hard going, and tempers showed signs of fraying on more than one occasion.

The 1997/98 forecast appeared to be marginally better than budget. The draft of the 1998/99 budget presented to the meeting showed a substantial deficit. (> £20,000). The meeting voted to recommend to Council that on the basis of a 2p increase in Game Fee (to 27p standard play/13½p rapidplay) the deficit should be no more than £2,000. A number of Directors volunteered or were required to make cuts, but more will need to be identified to achieve this target.

David Anderton attended to give a presentation on the Hastings International Chess Centre, in respect of which a lottery application will be submitted during March. The meeting gave its approval to the proposal to form a charitable company limited by guarantee, 5 out of the 11 directors of which will be nominated by the BCF, which would lease the Centre at a peppercorn rent from the Hastings Borough Council if the application were to succeed and the necessary matching funding could be raised. It also authorised the Chairman to sign a letter of intent for the BCF to occupy office space at the Centre for a minimum of 25 years subject to certain conditions and to take the lead role in developing the provision of chess related training and competitions at the Centre.

It was resolved that the European Team Championships 1999 will be organised by and through the medium of the BCF rather than by a separate limited company.

A joint paper by Chris Howell and Roger Edwards on the new grading system was agreed nem con. Hopefully they will both now be left in peace to get on with it.

Neil Graham presented a policy paper on Congress Chess. One of his proposals was to rationalise procedures for qualifying events; while each Union would still be able to nominate its champion and allocate two other qualifying places to a local congress or congresses, it would be required to pay the entry fee of the former, and the congresses would each be looked to for a £50 contribution toward the entry fee. These "requirements" were dropped; while the SCCU does in practice pay its champion's entry fee, it really should not be up to the BCF to tell us that we have to do so. Under the proposals the Surrey Easter Congress and the Hastings Weekend Open will lose their automatic places granted by the BCF, but each is still likely to obtain a place by virtue of being a large payer of Game Fee.

Alan Martin has resigned as a trustee of the BCF Youth Chess Trust. This now has no trustees.

JA Philpott volunteered to present a paper to a future meeting on the subject of honoraria.

As a result of the guillotine, a number of agenda items were not discussed. The papers received indicated that the Policy Unit is now operating and currently comprises David Eustace (Chairman), Stewart Reuben (ex officio as BCF Chairman), Fred Appleton and Matthew Turner.

### BCF POLICY UNIT

A few weeks ago it emerged that the Unit was to propose a radical change to the Federation's revenue structure; and it's coming up at the April Council Meeting. There would be a new lower tier of Direct Membership, linked to grading and (perhaps) completely replacing the Game Fee. The Bulletin is not privy to the Unit's deliberations, but has spoken to a couple of people who have been. The Unit has talked of a basic membership fee in the region of £10 a year, alongside the more expensive bells-and-whistles-attached existing one. Game Fee would "not necessarily" (one informant) be abolished. Intention seems to be that non-members would not have their games

graded; which, in practical terms, probably means that events wishing to be graded would have to insist on membership for all players. The other version, in which non-members just wouldn't have their grades published, "has not been ruled out" (same informant); and that's a whole other ball game.

This, if it's doable, is seen as the best way of increasing the Federation's income. (Doubling or tripling the Game Fee might bring in a similar amount.) The April Meeting will be asked whether it wishes the Unit to proceed. It will not have escaped readers' notice that Game Fee is only six or seven years old and was introduced with the overwhelming approval of Council. Your Editor supported it then but will listen to argument.

At this point we have to report that Fred Appleton died suddenly of a heart attack at the weekend of the 14th-15th March. He was 4NCL Chairman and, since September, the BCF Director of Coaching.

We must also note the sudden death, on 10th February, of Paul Battersby. He was 32. He belonged to the Wallington and Coulsdon clubs and was an active member of this year's Surrey U125 and U100 teams. He leaves a widow but no children.

### CONGRESS RESULTS

**KINGS HEAD RAPIDPLAY** 15th February 1998 attracted 153 players.

1-2 K Arkell 236 GM (Midland Monarchs), M Hebden 249 GM 5½/6; 3-9 R Bates 220 IM (Richmond), A Cherniaev 2465 IM, S Jackson 185 (Wood Green), J Naylor 201 (Coulsdon & Hackney), J Nunn 259 GM, J Plaskett 223 GM, M Sadler 262 GM (Maidstone) 5; 10-14 C Crouch 220 IM (Barbican/Harrow/Pinner), A Summerscale 237 GM (Slough), T Wall 214 (Coulsdon), R McMichael 194 (Kings Head), J Pigott 211 (Kings Head) 4½... **GRADING** 199-180 S Jackson; 179-160 N De Peyer 165 (Kings Head) 4; 159-140 PJ Kelly 157 4; 139-120 KB Nicholas 125 (RGS High Wycombe) 4; 119-100 DJ Cork 114 3; Under 100 S Hurst 80 (Edmonton) 3½ **JUNIOR** 15-14 KB Nicholas; 13-12 S Clark 147 (RGS H Wycombe); 11-10 R Mooring 136 (Richmond Juniors: listed as 13 on 1.1.97); U10 T Thirumurugan it says here 126? (Richmond Juniors). Some grades supplied by the Bulletin. Tony Suttill writes:

At a time of falling entries for tournaments, we were lucky to attract exactly the same number of entrants and players as last year, 53 entries being taken on the day (our highest ever). There were only 12 players with a BCF grade of 213 or more (or equivalent 2300+), but 6 were GMs (again a record for us), with only Aaron Summerscale missing out on a share of the prizes. The tournament was one of our best ever, the presence of so many GMs contributing, but whether we continue will be a matter for our AGM - we again made a deficit and cannot continue doing so, the whole purpose of these tournaments initially being to raise money for the Club, thus keeping subscriptions down.

**NORTH ESSEX RAPIDPLAY** at Colchester, 15th February 1998

**Open** (19 ent) 1 Gary Kenworthy (Powdermill) 5½/6; 2 Russell White (Chelmsford) 5; 3-4 Jason Dilley (Grantham), Jim Howson (Dartford) 4½... **JUNIOR** Chris Bates (Colchester) 3½

**U125** (34 ent) 1 Michael Bridger (Southend) 5½/6; 2 Robert Payne (Ilford) 5; 3-5 John Lambert (Clacton), John Sneesby (Basildon Juniors), Peter Sonneburg (Sudbury) 4½... **SLOW STARTERS** Nicholas Fenton (Colchester), Alistair Hung (Writtle), Robert Parish (Colchester), Catherine Taylor (Saffron Walden) - Slow Starters all juniors.

**U11** (28 pl) 1-2 Matthew Jellett (Southend), Edward Morris (Southend) 5/6; 3-5 Henry Duncanson (Norwich), James Heppell (Norwich), Antony O'Toole (Southend) 4½... **SLOW STARTER** Leah Oaker (Basildon)

**U9** (21 pl) 1 Lee Wicks (Colchester) 5½/6; 2 Peter Poobalasingham (Barnes) 5; 3-6 Andrew Alexandrou (Powdermill), Patrick Hanson (Saffron Walden), Andrew Lillie (Leyton), David Smith (Saffron Walden) 4... **SLOW STARTER** David Donaghy (Ipswich)

**16th RICHMOND RAPIDPLAY** 1st March 1998

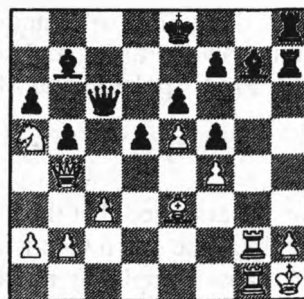
**Open** (16 pl) 1 IM Peter Large (London) 6/6; 2 Gavin Wall (London) 5; 3 IM/WGM Susan Lalic (Cheam) 4... **GRADING** U200 1-2 Steve Ledger (Bedford), David Wood (Chatham) 3½; U180 Martin Taylor (Rainham Kent) 3½ **Major U160** (20 pl) 1 Tony Kelly (High Wycombe) 5/6; 2-4 Bruce Birchall (London), Thomas Dougherty (RJCC/London), John Woolley (London) 4½... **GRADING** U140 1 Ben Chamberlain (RJCC/Surbiton) 4; 2-3 Chetan Deva (RJCC/Weybridge), Tyrone Woo (London) 3½ **Intermediate U120** (24 pl) 1-2 Thomas Nixon (RJCC/Kew), Chris O'Bee (Ilford) 5/6; 3 Maor Shine (London) 4½... **GRADING** U100 1 Robert Heaton (RJCC/New Malden) 4; 2 Jonathan Somekh (RJCC/London) 3½

**Minor U80** (42 pl) 1-4 Peter Alexander (RJCC/Surbiton), Sagar Deva (RJCC/Weybridge), David Manders (Ashted), Chris Manders (Ashted) 5...

**2-generation Family Prize:** John & Chris Kelly (Northampton) 7½

**Best Game Prize:** Gavin Wall, for his win against Richard Bates (see page 16). **Results** Richard James

**White Michael Mkpadi, Black Ricky Alboni.** Richmond Rapid (Intermediate)



Black to play

24...d4!! 25 Nxc6 Bxc6 26 Re1 Rxd2+ 27 Kg1 Rxd2+ 28 Kf1 Rh1+ 29 Bg1 Rxd2#



## JUNIOR NEWS

**WORLD JUNIOR CHAMPIONSHIPS** at Cannes, 8-12 December 1997. Bit out of date, but we've only just received the information, and half the English contingent were SCCU. More than 500 played, *four* of them English (a source of wonder to many of the other countries). No medals, but **Under 14** Desmond Tan (Surrey) 6½/11; **Under 14 Girls** Heather Richards (Kent) 7/11; **Under 12** Simon Buckley 6½/11; **Under 10** Gawain Jones 7/11. Results Sue Richards

### LANGLEY PARK JUNIOR at Beckenham, 24th January 1998

**Under 18** (3 pl) 1 Martin Taylor 6/6; 2 Mark Roberts 4... Well, we've had six-round Swisses with seven and eight players, how about three? In fact they played a double-round APA and the byes seem to have got added to the scores.

**Under 16** (4 pl, double-round APA again) 1 Thomas Rendle 5/6; 2 Andrew Bigg 3...

**Under 14** (23 pl) 1 Oliver Cooley 6/6; 2 Amir Habibi 4½; 3-6 Thomas Sharp, Russell Scott, Richard Cheeseman, Joseph Al Malah 4...

**Under 11** (31 pl) 1 Daniel Diamond 5½/6; 2-6 Karim Habibi, Zakerey Bennett, Samuel Lim, Thomas Stradwick, Arwen Van Der Elst 4½; 7-10 Adam Boakes, Matthew Bates, Laura Weatherhead 4...

**Under 9** (17 pl) 1-2 Christopher Collison, Gregory Wellman 5/6; 3-6 Geoffrey Walters, Lechj Sikorski, James McKeever, David Christie 4... Results David Brown

### CANTERBURY JUNIOR 7th February 1998

**Under 18/14** (18 pl) 1-3 Robert Wilson (Sevenoaks), Andrew Bigg (Hayes), Paul Higgins (Sevenoaks) 4½/6; 4-5 Russell Scott (Danson), Raymond Gosden (Whitstable) 4...

**Under 11** (21 pl) 1-2 Thomas Stradwick, Adam Boakes (both Bromley); 3 Stephan Wassermann-Fry (Sevenoaks) 4½; 4-7 Edward Coughlan (Sevenoaks), Gregory Jones, Robin Jones (both Maidstone), Sarah Broadbent (Bromley) 4...

**Under 9** (13 pl) 1-4 James McKeever ("Steephill"), Aram Karakashian (Danson), Christopher Collison (Maidstone), Joseph Arigho-Stiles (Sevenoaks) 6/8; 5 Matthew Hadfield (Maidstone) 5½...

### "TIMES" NATIONAL SCHOOLS CHAMPIONSHIP Interzonal stage

Rd 1 Bedford Modern (16.0) 1½ 4½ Northgate High Ipswich (14.2); Hymers College Hull (14.10) 2½ 3½ King Edward VI Camp Hill Birmingham (15.5); K Edward VII Lytham (15.3) 2½ 3½ Bluecoat Liverpool (13.7); Q Elizabeths Barnet (16.0) 3 3\* Aylesbury GS (15.2); Q Elizabeth Wakefield (13.6) 3½ 2½ Yarm School (where?: 14.7); Radyr School Cardiff (13.4) 3½ 2½ Hereford Cathedral School (14.8); St Columbs College Derry 16.1) 2 4 Hyndland School Glasgow (16.5); St Pauls London (16.4) 5½ ½ Winchester College (15.11); Temple Sutton Southend (10.11) 0 6 Maidstone Boys GS (14.5)

Rd 2 (last 16) Bluecoat v QE Wakefield; Hampton v Torquay GS; Hyndland v Nairn Academy; Camp Hill v Magdalen College School Oxford; Maidstone GS v Tiffin Kingston upon Thames; Manchester Grammar v Radyr; Northgate v Nottingham High; Aylesbury GS v St Pauls

Plate Bedford Modern (B team?: 12.0) 1 5 Magdalen College School (B team?: 12.6); Bolton School (12.3) 1 5 Lancaster RGS (15.10); Fitzalan High Cardiff (14.11) 0 6 Torquay Boys GS (13.2); Greenwood Academy v RGS Newcastle; Hasmonian High Hendon (14.3) 2 4 K Harold School Waltham Abbey (13.11); Kings College School Wimbledon (14.4) 6 0 Oathall Community College Haywards Heath (13.4); North Bridge House (12.2) 4 2 Haberdashers Askes Elstree (13.2); Q Elizabeths Junior School Wakefield (10.5) beat Old Hall Comprehensive Rotherham (13.11); Shrewsbury School w/o Katherine Lady Berkeleys School Wooton Under Edge (where?).

Rd 2 (last 16) Arden Solihull v Shrewsbury School; K Harold v St Olaves Orpington; Lancaster RGS v Greenwood Academy or RGS Newcastle; Magdalen College School v Torquay GS; Nicolson Institute Stornoway v Methodist College Belfast; North Bridge House v Ipswich School; Q Elizabeths v Kings School Grantham; Westminster School v Kings College School Wimbledon

Yes, three schools (and a pair) were in both Championship and Plate.

Results Mitchell Taylor

**ROTARY UK CHESS CHALLENGE** is in its third year and entries are up by 36% in terms of schools, and 39% in terms of players. 1997-8 totals: 986 schools, 33 386 players. Surrey are top on both counts. SCCU figures, with national rankings: 1 Surrey 108 (4131); 2 Middx 66 (2317); 5 Essex 52 (1890); 7 Kent 50 (1690); 11 Sussex 27 (840); 13 Herts 23 (840); 14 Berks 24 (765); 15 Bucks 22 (750); 22 Oxon 18 (555). It goes down to 38-9 Guernsey and Jersey, both on 1 (30). Scotland and Wales, being rather big counties, are 6th and 8th respectively. Biggest school entries are Park Hill (Essex) and RGS Newcastle with 120 players each.

Megafinals are 2nd or 3rd April (except Scotland); Gigafinal is 12th July at Nottingham; and Terafinal (a 16-player KO) is 29th August in London.

"If your postcode starts with CR, SE, SW or SM, you are eligible for East Surrey; and if it starts with GU, KT, RG, RH or TW, you are eligible for West Surrey." - East Surrey Girls v West Surrey Girls (Freeman Challenge Cup) 20.6.98. There's going to be border wars in SE if Kent see that.

### NEW COMPETITION NEXT YEAR?

Nigel Dennis has circulated proposals for a possible SCCU U14 inter-county competition. Teams of ?12, with a grading restriction (?U90). If everyone plays, he suggests three preliminary groups (APA ?double round); and a jamboree final for the three winners, which might be held alongside the U18 qualifiers. There has not yet been time to get reactions from the counties.

For other NWD proposals, see Executive Report (page 2).

# SCCU UNDER 18 JAMBOREES

7th March 1998 at Watford Boys School

The boys have first names as well this time, so we've printed them all. Oh, except for Bucks. Bucks gave first names for girls only, so Bucks players of both sexes just get their initials. Spotted three wrong grades from the BCF August list, but it's the season for that. We weren't looking for them, and didn't check for others; so grades as supplied, even where known to be wrong.

White on left. 35 in 1 3/4 + QPF 30/30.

## MAJOR COUNTIES (on right hand side, White "floated" up)

1 Tim Hebbes 174 E	0	1	Mark Roberts 180 K			Martin Taylor 178 K	1	0	Thomas Thrower 182 S
2 Matthew Broomfield 171 S	1	0	Simon Armour 161 E						
3 Thomas O'Brien 155 E	1/2	1/2	Michael Duggan 170 S			Andrew Bamford 170 S	1/2	1/2	Matthew Noakes 170 K
4 Alvin Kissoon 165 K	1/2	1/2	Lawrence Trent 120 E						
5 Bobby Payne 118 E	1/2	1/2	Rosalind Kieran 153 K			Peter Titmas 138 K	1/2	1/2	Oliver Payne 151 S
6 Sujit Kapadia 149 S	1/2	1/2	Iain Gunn 116 E			Kevin Tam 113 S	1/2	1/2	Stephen Casement 137 K
7 Robert Giddens 116 E	1/2	1/2	Martin Moore - S			Kevin Smyth 129 K	1	0	Gavin Chu 89 S
8 Andrew Bigg 135 K	1	0	def E			Christopher Hoffman - S	0	1	Simon Thanesan 124 K
9 Graham Walker 96 E	0	1	Leigh Bennett 131 K						
10 Keval Gudka - S	0	1	Josiah Lutton 96 E						
11 Stewart Trent 93 E	0	1	Nicholas Bawden 93 S						
12 Paul Richards 97 K	1	0	Jason Klimach 78 E						

Positions: 1 Kent (mean grade 145) 9 1/2/12; 2 Surrey (132) 5; 3 Essex (119) 3 1/2.

## MINOR COUNTIES

On unnumbered boards, White "floated" up.

1 Adam Hunt 208 O	1/2	1/2	Costas Harris 163 H			Laurence Rackham 142 S	1/2	1/2	M George 160 Bu
Peter Jackson 150 H	1/2	1/2	Aiden Leech 187 Br						
2 David Gold 172 Br	1/2	1/2	Thomas Rendle S?			S Clark 147 Bu	0	1	Stephen Bough O
3 Liam Blanc 168 Br	1	0	K Thursby 141 Bu			Christopher Lovisa 147 H	1	0	Ben McManus 128 S
John Bryant 89 S	1/2	1/2	Wayne Tutty 123 O						
4 James Buchanan 105 O	1/2	1/2	James Foster 128 Br			T Quilter 130 Bu	0	1	Lorin D'Costa 141 H
5 Graham Morris 105 O	0	1	A Hughes 127 Bu			Rhys Bowen 97 S	0	1	Liam Varnam 124 Br
Ivana Houska 123 Br	1	0	def H						
6 K Nicholas 125 Bu	1	0	Edward Lamb 96 S			def H	0	1	Jonathan Kennedy 87 O
7 Adrian Jones 112 Br	1	0	Oliver Taylor 48 O			Iain Murray - H	0	1	H Lossock 102 Bu
Simon Wright 83 O	1	0	Daniel Triggs 86 S						
8 L Goodwin 106 Bu	0	1	Malcolm Bovey 108 Br			Matthew Moore 106 S	1/2	1/2	Andrew Tang - H
9 Kenneth Hunt 105 O	0	1	Nick Chandler 95 H			David Howell 85 S	1	0	A Thorpe 82 Bu
Jonathan Griffin - H	1	0	Mark Honickberg 91 Br						
10 Andrew Navias 95 Br	0	1	David Boyle 61 S			E Cormack 91 Bu	1	0	Robin Netherway 81 O
11 Joshua Pitts 87 Br	0	1	T Fuller 88 Bu			Oliver Drasar 113 H	1	0	Peter Baker 70 S
Charlie Linford - S	0	1	Claire Morris 77 O						
12 Judith Rawlings 54 O	1/2	1/2	Tom Sams 63 Br			N Balderson 89 Bu	1/2	1/2	Paul McGowan 50 H

Positions: 1 (tie-break) Berks (mean grade 121) 7/12; 2 Herts (113) 7; 3-4 Bucks (116), Oxon (101) 6; 5 Sussex (96) 4. Not sure what tie-break method was in use, but it's hard to think of one that puts Herts first.

## GIRLS FIRST TEAMS

On unnumbered boards, White "floated" up.

1 Iva Anguelov 144 M	1	0	Ellen Walker 117
Heather Walker 77 E	0	1	Ruth Bates 161 S
2 Claire Thrower 148 S	1	0	Alison Winston 97 M
3 Lucy Styles 92 M	1/2	1/2	Lucy Broomfield 133 S
Jo Hart 130 S	1	0	Francesca Berlin 56 E
4 Isobel Huang-Doran - E	0	1	Mary Hinks-Edwards 91 M
5 def M	0	1	Leah Oaker 41 E
Laura Perham - E	0	1	Kate Feld 97 S
6 Anna Partington 68 S	0	1	Naomi Attar 78 M

Positions: 1 Surrey (mean 123) 4 1/2/6; 2 Middx (98) 3 1/2; 3 Essex (63) 1

## GIRLS SECOND TEAMS

Surrey

Jessie Gilbert 91 (B)	1	0
Ali Wilson 67	1	0
Joanne Sui Tit Tong 46	1	0
Sarah Hegarty 79	1	0
Harriet Bates 67	1	0
Laura Cooke -	1	0
	6	0

Middx

Hannah Storer 77
Elaine Bettany -
Annake Treon -
Sacha Malde -
Shilpa Kodati -
Susannah Pritchard -

They called this a jamboree, but we thought we'd print it like a match.

## FRIENDLIES (for grading, if anyone's doing it):

Ivana Houska 123 Br	1	0	Andrew Bigg 135 K
Jonathan Kennedy 87 O	1	0	Leah Oaker 41 E

## QUALIFICATION FOR BCF FINALS ("Boys" 4th April, Girls 23rd May)

In each event, one team qualifies. They've been known to accept two nominations, to fill gaps no doubt. NWD has asked what the chances are in the "Boys" Minor, and awaits a reply. The Finals once again include a Girls



Second Teams event, and the BCF will be running it themselves this time. There is also a Girls Minor event. Can we fiddle Middx in as Minor? Wouldn't ask, only no one's ever told us what Minor means in U18 circles. Ah, DRS has found out. It's in the 1993 Yearbook. One of these days we'll get the BCF to put all their rules in every time, and not make you scurry around in the loft finding out which YB it's in. Well, it's where our copy was, after the spring clean. You're Minor if you haven't been nominated in the Major in either of the two previous years. Unless they've changed it since. Research in past Bulletins (not in the loft) suggests that Middx *are* Minor.

#### NYCA UNDER 16 CHAMPIONSHIPS at Solihull, 14th March 1998

1 Richmond 31/36; 2 Kent 29½; 3 Glamorgan 23½; 4-5 Bucks, Manchester 23; 6 Warwicks 21½; 7-8 Cheshire, Wilts 16½; 9-10 Surrey, Yorks 14½; 11 Berks 13½; 12 Staffs 4½; 13 Lincs 2½  
Results AJW Thorn

#### KENT Primary Championships 28th February 1998

U11 (16 pl) 1 Edmund Birkhamshaw 5/6; 2 Harry Shaw 4½; 3-4 Sara Higgins, Robert White 4...

U10 (15 pl) 1 Amir Habibi 5½/6; 2 Stephan Wassermann-Fry 5; 3-4 Daniel Diamond, David Franklin 4...

U9 (18 pl) 1 Thomas Sharp 5/6; 2-3 Karim Habibi, Jason Halle 4½...

Schools League 1997-8: Senior last-four event 18.3.98. From 14 entrants, St Olaves GS Orpington managed to get an "A" and a "B" team to the last four. No one's done that before. But Maidstone GS stole the show by regaining the title they lost to St Olaves last year. St Olaves "A" were second.  
Results US

#### ESSEX Junior Championships 28th Feb / 1st March 1998

U18/16/14 (20 ent) 1 Lawrence Trent (Ilford: age 11) 5½/6; 2-4 Michael Bridger (Leigh on Sea), Iain Gunn (Maldon), Ezra Lutton (Basildon) 4...

U11 (27 ent) 1 Nicholas Jellett (Southend) 5½/6; 2 Matthew Jellett (Southend) 5; 3 Andrew Murphy (Stock) 4½...

U9 (24 ent) 1 Abigail Flint (age 7: Chelmsford) 5½/6; 2-3 David Smith (Saffron Walden), Joe Martin (Saffron Walden) 5; 4 Alex O'Toole (Southend) 4½...  
Results Chessex

#### EPSCA ZONALS

##### UNDER 11 at Maidenhead 21st March 1998

1 Wilts 40/60; 2 (tie-break presumably) Hants 40; 3 Devon 38½; 4 Somerset 38; 5 Bucks 31; 6 Sussex 30½; 7 Cornwall 21½; 8 Berks 20½; 9 South Glos 10. Top four qualified for Final. Believe they split ties on Number of Wins. When we mentioned the Football League a while ago, someone said we were out of date. But we understand that, whatever they're called now, they attach even more weight to Wins than EPSCA do. Fair enough, if you're consistent about it. But can it be right to score draws as half a win, then devalue them on tie-break?

##### UNDER 9 14th March 1998

South-East at Barnet: 1 Richmond 31½/36; 2 Barnet 25½; 3 Kent 25; 4 Wey Valley 24½; 5 Sussex 23½; 6 Essex 20; 7 NW London 17½; 8 Bucks 14; 9 Suffolk 12; 10 Herts 9; 11 S London 7½; 12 Croydon 5. Top 5 qualified.

"Yeovil" at Yeovil: 1 Somerset 27/37; 2 Devon 19; 3 Wilts 16½; 4 Berks 16; 5 Hants 15½; 6 Cornwall 14. Top three qualified, and Hants get there as hosts.  
Results (but not comments) Nigel Dennis, Brian Lacey

ESSEX: North Essex League 7½ 9½ Southend and District League 28.2.98. "The absence of Writtle players was due to a clash of fixtures", but the Bulletin doesn't know which side the Writtle players would have been on. Writtle were engaged in a double-round friendly against Freising (Germany), which they won 12½-7½; followed by an APA 5-minute match which they won 51½-48½. (Work that one out.) Former Writtle player Christoph Braun was top board for Freising, and we don't know whether Writtle had him on loan from Freising in the first place.

Essex Centenary arrangements are well advanced. There will be a match Essex Past v Essex Present on the 3rd October 1998, and a match v Rest of SCCU on the 11th. Plus a Centenary Dinner.

#### NATIONAL CLUB

Pre-season questionnaire to entrants: (1) As the prizes are now equal, should the entry fees be the same for all sections? (2) Should the Scots and Welsh continue to go straight to the last 16 in the Open? (3) Should the U125 and U100 be a car-friendly 4 boards rather than 5? (4) Should there be limits on mean grade rather than straight Under X, and if so should there still be a (higher) straight maximum? (This presumably means all sections except the Open, though only the U100 is mentioned. Questionnaire suggests that the idea would be a mean of U100, but you'd have to change the figure if you wanted to maintain the strength of the competition.) Just noticed (5): Should the Open regain its qualifying place in the European Club? There'll be ructions if they raise that *again*.

\* means win on board count or elimination. Or handicap presumably, in the Handicap.

##### OPEN (22 English entries)

Rd2: Atherton 3 3\* Ilford; Bristol & Clifton 3 3\* Maidstone; Crowthorne 5 1 Hastings & St Leonards; Keynsham 2 4 Slough; Wood Green 5½ ½ Bradford.

Rd3 (by 5th April): Crowwood v Wood Green; Ilford v Crowthorne; Maidstone v Wandering Dragons; Slough v Atticus. The Bulletin cannot place Wandering Dragons or Crowwood. Neither name appears in our BCF club list.

**Plate Rd 1** Hayes Kent 3½ 2½ Hounslow. **Rd2** Bedford v Grimsby & District; Charlton v Gloucester; Guildford v Hayes Kent; Mushrooms v Southbourne.

**MAJOR U175** (20 entries)

**Rd 2** Great Lever (Gtr Mcr) 3½ 1½ Hunts Cross (?); Northampton 2 3 Writtle; Southbourne 4 1 Maidstone.

**Rd 3** Great Lever v Morecambe; Guildford v Gloucester; Hastings v Writtle; Southampton v Southbourne.

**Plate Rd 1** Cosham 3 2 Teignmouth. **Rd 2** Undercliffe (Yorks) v Bradford; Huddersfield v Warley Quinborne; Kingston v Milton Keynes; Reading v Cosham.

**INTERMEDIATE U150** (34 entries)

**Rd 2** Wood Green 2 3 Waltham Forest. **Round 3** Ashfield 4 1 Hereford; Eastbourne 3 2 Phoenix; Gt Lever 3 2 Grimsby; Hammersmith 1½ 3½ Bourne End, Maidstone 3 2 Bedford; Morecambe 2 3 Rose Forgrove; Thornbury \*2½ 2½ Walsall Kipping; Southbourne *no result* v Waltham Forest.

**Rd4** (by 14 Apr) Bourne End v Eastbourne; Rose Forgrove v Gt Lever; Southbourne *or* Waltham Forest v Maidstone; Thornbury v Ashfield.

**Plate Rd1** Basingstoke 2½ 2½ \*Cosham; Cardiff 3½ 1½ Reading; Hastings 3 2 Ashford; Northampton WMC 3½ 1½ Warley Quinborne; Prescott & Knotty Ash 3½ 1½ Crusaders; Southend 3 2 Wanstead & Woodford; Tunbridge Wells 1 4 Kings Head; Yorkshire Copperworks w/o scr Heywood.

**Rd2** Cardiff v Northampton WMC; Cosham v Hastings; Kings Head v Southend; Prescott & KA v Yorkshire Copperworks.

**MINOR U125** (37 entries)

**Rd 2** Hereford 1½ 3½ Aberystwyth; West End 0 5 Alwoodley (both Yorks); Rose Forgrove (Yorks) 2 3 Tamworth (Staffs); Rushall (Staffs) *no result* v Grays; Heywood (Gtr Mcr) 1½ 3½ Amber Valley (Derbys); Cowley 3 2 Basingstoke; Kings Head *no result* v Bourne End; Southampton Univ 1 4 Maidstone; Whitstable w/o scr Capablanca (?); Southampton 2 3 Tunbridge Wells.

**Rd3** Maidstone v Whitstable; Kings Head *or* Bourne End v Rushall *or* Grays. Rest have byes. Now there's a man who won't give you a bye because your result's late. Another course might have been to tell them thanks very much and we don't need **Rd3** now. But the Bulletin doesn't know the circumstances.

**Rd4** Aberystwyth v Kings Head *or* Bourne End *or* Rushall *or* Grays (!); Amber Valley v Alwoodley; Tamworth v Cowley; Tunbridge Wells v Maidstone *or* Whitstable.

**Plate Rd1** Musketeers (WECU) 3 2 Totnes; Great Lever (Gtr Mcr) 3½ 1½ Prescott & Knotty Ash; Barton Youth Centre (?) scr w/o Ashfield (Notts); Reading w/o scr Kilndown; Phoenix 1 4 Waltham Forest. Byes: Hastings, Hull, Walsall Kipping.

**Rd2** Ashfield v Hull; Musketeers v Reading; Walsall Kipping v Gt Lever; Waltham Forest v Hastings.

*The Minor, subject to initial delays when its designated controller didn't control it, suffered further misadventures but is believed to be on an even keel now. The Chief Controller, Bob Turnham, has taken over.*

**UNDER 100** (9 entries)

**Rd2** (by 8 March) Reading v Maidstone; Basingstoke v Grappenhall (NCCU?) or Finchley.

**Plate Rd1** Syston (Leics) v Grays; Eastbourne v Coulsdon & Purley.

**HANDICAP RAPIDPLAY** (at least 22 entries). Mean grades in brackets, but we don't know the handicap rules. See if you can work them out.

**Rd2** Poulton Le Fyld (137) 0 8 White Swan (Gtr Mcr) 181; Southbourne (182) 5½ 2½ \*Keynsham (143); Rainham (188) 4½ 3½ \*Bourne End (162); Crowthorne (193) 3 5 Slough (168).

**Rd3** White Swan v Crowley; Bourne End v Guildford A; Slough v Maidstone; Bedford v Keynsham.

**Plate Rd1** Basingstoke (147) 2 6 Cardiff (173); Imperial College (159) 7 1 University of London (146). **Rd2** Abercynon v Cardiff; Gt Lever v Imperial College; Mushrooms v Basildon; Southampton Univ v Guildford B.

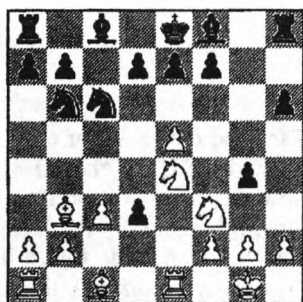
With acknowledgments to the various controllers. The Bulletin hopes it's added the initial entries up correctly.

Time for some County Matches. We'll have a Game first.

**White KR Clark** (Herts), **Black JH Hodgson** (Essex)

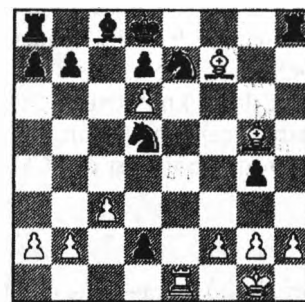
County match: Open 28.2.98

1.e4 c5 2.c3 Nf6 3.e5 Nd5 4.d4 cxd4 5.Bc4 Qc7 6.Qe2 Nb6  
7.Bb3 d3 8.Qe4 Qc6 9.Nd2 Qxe4+ 10.Nxe4 Nc6 11.Nf3 h6  
12.0-0 g5 13.Re1 g4



White to play

14.Nd6+ exd6 15.exd6+ Kd8 16.Ng5 hxg5 17.Bxg5+ Be7  
18.Rxe7 Nxe7 19.Bxf7 Nbd5 20.Re1 d2



White to play

21.Rxe7 d1Q+ 22.Re1+ Ne7 23.Bxe7#

U175 county match Essex-Surrey 7.2.98 (Essex White) 1 d4 d5  
2 Bf4 c5 3 e3 Qb6 4 Nc3 a6 5 Nxd5 Qa5+ 6 c3 f6 7 Bc7 1-0  
"Is seven moves a record for a decisive game in an SCCU  
competition?" It may be, but if so it was equalled six weeks later  
by another member of the team, against Sussex this time. 1.e4 c5  
2.Nf3 d6 3.c3 Nf6 4.d4 Nc6 5.Be2 Nxe4 6.d5 Ne5 7.Qa4+ 1-0

In a recent match, the two sides sent in differing results for one of the games. Unconfirmed reports say it was the classic case. The players shook hands. Then one of them told his match captain, "I won"; and the other one told his match captain, "I drew". Not sure how the captains would have sorted that out, ten days afterwards, but it is sorted.

## SCCU COUNTY MATCHES: FINAL LEAGUE TABLES

OPEN	K	Sx	C	H	E	Br	Sy	Bu	O	GP	MP
1 Kent		8	8	12	10½	11	8½	13½	8½	80	7
2 Sussex	8		10	10½	6½	12	13	10	10½	80½	6½
3 Cambs	8	6		10½	9½	13	13½	11½	12	84	6½
4 Herts	4	5½	5½		10½	11½	9	8½	11½	66	5
5 Essex	5½	9½	6½	5½		9	10½	9	10½	66	5
6 Berks	5	4	3	4½	7		8½	9	9½	50½	3
7 Surrey	7½	3	2½	7	5½	7½		11½	8½	53	2
8 Bucks	2½	6	4½	7½	7	7	4½		11½	50½	1
9 Oxon	7½	5½	4	4½	5½	6½	7½	4½		45½	0
UNDER 175	E	Sy	Sx	K		E	Sy	Sx	K	GP	MP
1 Essex		10½	10½	10			10½	12	12	65½	6
2 Surrey	5½		8	11½		5½		9	9	48½	3½
3 Sussex	5½	8		5½		4	7		16d	46	1½
4 Kent	6	4½	10½			4	5	0d		30	1
UNDER 150	K	E	M	H	Sy	Sx				GP	MP
1 Kent		8	10	8½	11	11				48½	4½
2 Essex	8		10	8½	8	9				43½	4
3 Middx	6	6		8½	10	12				42½	3
4 Herts	7½	7½	7½		7½	8½				38½	1½
5 Surrey	5	8	6	7½		8				34½	1½
6 Sussex	5	7	4	7½	8					31½	½
UNDER 125	O	H	Sy	E	Sx	K				GP	MP
1 Oxon		8	8	8½	8	10				42½	3½
2 Herts	8		8	7½	9½	12				45	3
3 Surrey	8	8		12½	8	4				40½	2½
4 Essex	7½	8½	3½		12½	8				40	2½
5 Sussex	8	6½	8	3½		9				35	2
6 Kent	6	4	12	8	7					37	1½
UNDER 100	Sy	E	H	M		Sy	E	H	M	GP	MP
1 Surrey		6½	6½	8			5½	8	4	(32½)	38½
2 Essex	5½		8½	5		6½		6½	12d	(32 )	44
3 Herts	5½	3½		7½		4	5½		9		35
4 Middx	4	7	4½			8	0d	3			26½

Results boxed have been used for tie-break where teams finished level on matches. In two cases the tie remained and it went to overall game points. Which, in the U100, meant a further complication: one of the teams tying for first place had won a match by default. For tie-break purposes those 12 points did not count towards overall games. The other tying team, correspondingly, was docked the average of the two scores it made against the defaulter. It's in the rules. Figures in brackets are game points after this adjustment.

The rule *can* mean that it's against a team's interests to win by default. In Essex's case the end-of-season default ensured their place in the BCF Stage, but robbed them of the chance to come first. They have lodged an appeal against the application of the rule.

## BCF Stage

Qualifiers: top two in each competition (three in Open). Minor Counties: 1 Herts, 2 Berks. Draw for BCF Stage:

Open Quarter-final (A) W1 v M2 (B) M1 v S3 (C) N v S2 (D) S1 v W2

Minor Quarter-final (A) E1 v M3 (B) W v M2 (C) M1 v S2 (D) S1 v E2

Under 175 Quarter-final (A) E v M2 (B) S1 v N2 (C) N1 v M1 (D) W v S2

Under 150 Preliminary round (X) E2 v M2 (Y) S2 v W2; Quarter-final (A) W1 v (X) (B) S1 v N2 (C) N1 v (Y) (D) E1 v M1

Under 125 Preliminary round (X) N2 v W; Quarter-final (A) E1 v M2 (B) M1 v E2 (C) N1 v S2 (D) S1 v (X)

Under 100 Quarter-final (A) W v N1 (B) M1 v S2 (C) E v N2 (D) S1 v M2

Semi-finals, all events (A) v (C) (B) v (D)

Dates, all divisions: Preliminary round 25th April; Quarter-finals 16th May; Semi-finals 13th June; Finals Saturday 4th July

## Players

C Kremer (Cambs v Sussex 17.1.98, last issue) was C Kreuzer. We queried it but didn't solve it. Sussex match captain isn't the only one this season who's had trouble with Cambs handwriting. Cambs aren't the worst.

There's a new candidate for Most Over-Qualified Tea Boy. In a critical end-of-season match, a player graded well over 200 turned up only to find that his match captain had thought him unavailable. Too late to put him in, so he stayed on and helped with the teas.

## Published grades

Noticed, by accident, that a match captain in one of the grading-limited divisions has been using uncorrected grades from the BCF Autumn list. Two (maybe more?) of his players were affected; fortunately, eligibility wasn't. Got a note, later, from an Open match captain who's been doing the same thing. The SCCU list, which incorporates the corrections, was official for SCCU matches. The corrections *are* in force for the BCF stage. The rules refer to the BCF grading list "current on the 1st September". BCF's correction-supplement was pre-season all right. Not sure whether it really was out by the 1st September, but if it wasn't the front cover pretends it was. Which neatly avoids deciding what "current" means when a grade gets corrected after the 1st September. Like February, say. Or March (or April?) if you're late. Last we heard, they still hadn't decided whether the "February" corrections would apply.

## COUNTY MATCH RESULTS

(Complete. Everything's in.)

## OPEN

Cambs*	31.1.98	Essex*	Kent*	17.1.98	Herts*
1 J Parker 243 (W)	½ ½	JW Rogers 217	Neil McDonald 237	1 0	Phil G Maguire 198 (W)
2 M Turner 233	1 0	AP Lewis 212	Philip Morris 223	1 0	Steve Sorenson 201
3 M Ferguson 226	1 0	DJ Coleman 208	James Vigus 210	½ ½	Philip Borman 201 <sup>1</sup>
4 H Hunt 217	1 0	DA Sands 204	Andy Mack 202	½ ½	Paul V Byway 196
5 A Cohen 213	0 1	M Twyble 200	Lyndon Gurr 201	½ ½	Jerry F Rudge 186
6 A Harley 206	0 1	JP Manley 205	John Sugden 196	1 0	Kevin R Clark 188
7 D Moskovic 204	½ ½	G Kenworthy 200	John Naylor 201	1 0	Andrew Gilfillan 187
8 D Hassabis 199	½ ½	JH Hodgson 196	David Farndon 194	0 1	Howard L Tebbs 182
9 M Shephard e195	½ ½	PL Williamson 184	John Wager 193	1 0	JN Fraser-Mitchell 179
10 S Foister e190	0 1	MC Rich 184	Peter Taylor 191	½ ½	Chris E Majer 180
11 M Thornton 187	0 1	JA Goldberg 178	Gordon Botley 191	½ ½	John R Denton 177
12 P Scott 182	1 0	RP White 187	Alexis Harakis 188	1 0	Philip J Gregory 169
13 D Rosenberg 177	½ ½	R Parker 177	Chris Howell 188	½ ½	Barry Morris 161
14 B Morgan 171	1 0	JC Moore 182	Rory O'Kelly 183	1 0	David E Bower 159
15 S White 169	1 0	W Saunders 171	Nigel Donovan 180	1 0	John Cook 158
16 S Larski 167	1 0	I Myall 168	Chris Rice 171	1 0	David M Hill 150
(Cambridge)	9½ 6½		(Charlton House)	12 4	

<sup>1</sup> Bd 3: can't identify

Oxon*	31.1.98	Sussex*	Berks*	31.1.98	Bucks*
1 M Devereaux 208 (B)	½ ½	DH Cummings 208	PS Cooksey 200 (B)	0 1	Richard Webb 211
2 A Hunt 208	½ ½	FJ Kwiatkowski 204	DS Tucker 187	0 1	Andrew P Smith 202
3 M Rose 197	0 1	DB Graham 204	KD Smallbone 184	1 0	Gerald Moore 202
4 A Lewis 183	0 1	LE Rutherford 198	PJ Sharp 183	1 0	Jonathan Beedle 184
5 J Wittman 186	0 1	GH James	MV Taylor 180	½ ½	Robert J Richmond 185
6 T Dickinson 185	1 0	B Cafferty 192	DL Roberts 177	1 0	Leon Wooldridge 174
7 S Jayakumar 180	0 1	KI Norman 198	I Duvall 176	½ ½	Roger de Coverly 173
8 G Chapman 172	0 1	MD Nicholas 192	IR Henderson 170	1 0	AMJ Robbings 172
9 R Starkie 171	0 1	M Broom 193	ACP Milnes 170	1 0	MJ Armstrong 166
10 D Bruce 166	0 1	SJ Newman 187	PS Janota 168	1 0	Anthony G Kelly 165
11 M Hannon 165	1 0	JA Dodgson 179	J Townsend 167	½ ½	Matthew George 160
12 J Stayt 166	0 1	PG Farr 179	MC Bowhay 166	0 1	Stephen Law 156
13 S Terry 160	1 0	MR Stott 177	PR Maul 155	0 1	William EC Hughes 156
14 N Hepworth 154	0 1	MO Costley 176	MF Redmond 156	1 0	Andy Huxley e150
15 P Ball 150	1 0	RJ Almond 175	PAF Watkins 152	½ ½	Brian Atkinson 150
16 W Burt 149	½ ½	J Graham 165	BG Millis 148	0 1	Andrew J Hughes 127
(Long Hanborough)	5½ 10½		(Wokingham)	9 7	

Herts*	31.1.98	Surrey	Bucks*	14.2.98	Cambs*
1 Phil G Maguire 198 (B)	0 1	Richard A Bates 220	Andrew P Smith 202	0 1	Mark Ferguson 226 <sup>1</sup> (B)
2 Simon JB Knott 226	1 0	Peter J Sowray 213	Gerald Moore 202	0 1	Brian R Kelly 222
3 Steve Sorenson 201	0 1	Steve H Berry 209	Mike Lambshire 197	1 0	Aron J Cohen 213
4 Philip Borman 201	0 1	Russell G Granat 197	Jonathan Beedle 184	½ ½	David M Moskovic 204
5 Paul V Byway 196	½ ½	Rawle A Allicock 196	Robert Richmond 185	½ ½	Jack Rudd 197
6 Jerry F Rudge 186	1 0	Jon C Benjamin 194	Raymond B Edwards 185	½ ½	Natasha Regan 194
7 Alastair M Simpson 187	1 0	Kevin D Richardson 192	Leon Wooldridge 174	0 1	Martin Shephard e190 <sup>2</sup>
8 Simon J Roe 185	0 1	M Anderton 204 <sup>1</sup>	Hans-Peter Hansen 180	½ ½	Mark H Thornton 187
9 Andrew Gilfillan 187	0 1	Daniel B Rosen 190	Majid Mashayekh 173	½ ½	Ian Gooding 177
10 Kevin R Clark 188	½ ½	Peter D Kemp 187	Roger de Coverly 173	½ ½	Ben Morgan 171
11 Chris E Majer 180	1 0	Julien M Shepley 174	Andrew MJ Robbings 172	0 1	Stuart A White 169 <sup>1</sup>
12 JN Fraser-Mitchell 179	1 0	David R Sedgwick 173	Malcolm Armstrong 166	0 1	Stanislav Larski 167
13 John R Denton 177	1 0	Paul Dupré 158 <sup>1</sup>	Matthew George 160	0 1	Edward R Goodall 166 <sup>1</sup>
14 D Ross Brennan 175	0 1	Philip M Stimpson 170	Stephen Law 156	0 1	Mark C Campbell 153
15 Philip Gregory 169	1 0	Chris RA Clegg 168	Manfred Egby 156	½ ½	NC Pyper 151
16 Marry Morris 161	1 0	Ken FH Inwood 160	Brian Atkinson 150	0 1	Chris RL Kreuzer 130
(St Albans)	9 7		(Marlow)	4½ 11½	

<sup>1</sup> Bds 8, 13: both late substitutes, to judge from the Herts result sheet.<sup>1</sup> Bucks mc: "Cambridge gave grades of 226 Ferguson, 169 White, 167 Goodall. I have, however, quoted grades from the 1996/7 [1997/8? - Ed] BCF Grading list for these players. I understandthat there have been some amendments of this list, which may account for the discrepancy, but I am not in receipt of these amendments." We have printed the correct versions, and one was from Bucks. <sup>2</sup> Yes, the estimate has changed.

Sussex*	14.2.98	Herts*	Essex*	14.2.98	Oxon*
1 FJ Kwiatkowski 204	1 0	Philip Borman 201 (B)	JW Rogers 217 (W)	0 1	S Ansell 216
2 DB Graham 204	0 1	PV Byway 196	AP Lewis 212	1 0	M Devereaux 208
3 LE Rutherford 198	1 0	JF Rudge 186	M Twyble 200	½ ½	T Dickinson 185
4 GH James 197	1 0	KR Clark 188	JP Manley 205	½ ½	D Hackett 186
5 BJ Denman -	½ ½	A Gilfillan 187	G Kenworthy 200	1 0	G Chapman 172
6 M Broom 193	½ ½	HL Tebbs 182	JH Hodgson 196	½ ½	R Starkie 171
7 SJ Newman 187	½ ½	JN Fraser-Mitchell 179	PL Williamson 184	1 0	D Bruce 166
8 JA Dodgson 179	½ ½	CE Majer 180	JA Goldberg 178	½ ½	L Millin 167
9 PG Farr 179	1 0	JR Denton 177	RP White 187	0 1	N Cundy 162
10 JM (so) Mansson 178	½ ½	DR Brennan 175	R Parker 177	1 0	S Terry 160
11 MR Stott 177	0 1	PJ Gregory 169	JC Moore 182	1 0	N Hepworth 154
12 MO Costley 176	½ ½	Terry J Turner 163	D Kraszewski 183	½ ½	N Jones 166
13 RJ Almond 175	1 0	B Morris 161	W Saunders 171	1 0	P Ball 150
14 RV Elliston 174	½ ½	DE Bower 159	R Heppinstall 170	½ ½	M Cundy 150
15 IG Kelly 167	1 0	John Cook 158	D Millward 168	½ ½	W Burt 149
16 R O'Brien 171	1 0	def	IBN Smith 161	1 0	J Buchanan 105
(Brighton)	10½ 5½		(Writtle)	10½ 5½	

Surrey	14.2.98	Kent*	Kent*	25.2.98	Sussex*
1 Richard Bates 220 (B)	½ ½	Neil McDonald 237	PJ Morris 223 (B)	0 1	DH Cummings 208
2 Susan Lalic 221	½ ½	Ian Watson 214	SW Giddins 214	½ ½	FJ Kwiatkowski 204
3 PJ Sowray 213	½ ½	James Vigus 210	AL Mack 202	½ ½	DB Graham 204
4 Stephen H Berry 209	½ ½	Alan Hanreck 201	AE Hanreck 201	1 0	LE Rutherford 198
5 Mathew (so) N Anderton 204	1 0	Lyndon Gurr 201	LR Gurr 201	0 1	GH James 197
6 Michael J Franklin 204	1 0	Chris Cooley 205	John Naylor 201	1 0	B Cafferty 192
7 Rawle A Allicock 196	0 1	John Sugden 196	JN Sugden 196	1 0	F Rayner 193
8 KD Richardson 196	½ ½	David Farndon 194	JD Wager 193	0 1	BJ Denman
9 David Gunter 190	0 1	Peter Taylor 191	PP Taylor 191	0 1	M Broom 193
10 Daniel Rosen 190	½ ½	Nathan Alfred 190	NSW Alfred 190	1 0	MD Nicholas 192
11 Peter Kemp 187	½ ½	Alexis Harakis 188	AM Harakis 188	0 1	SJ Newman 187
12 Philip Stimpson 170	1 0	Gordon Botley 191	Ian (so) Galloway 184	1 0	JC Mansson 178
13 Chris Clegg 168	0 1	James Scholes 184	RMR O'Kelly 183	0 1	PG Farr 179
14 Martin Page 164	0 1	Stuart Williams 181	JR Bayford 183	½ ½	MO Costley 176
15 Ken Inwood 160	0 1	Nigel Donovan 180	NP Donovan 181	½ ½	MR Stott 177
16 R John Wilcox 152	1 0	Syd Jacob 162	DJ Horton 179	1 0	RJ Almond 175
(Sutton)	7½ 8½		(Charlton House)	8 8	

Cambs*	28.2.98	Berks*	Oxon*	28.2.98	Bucks*
1 J Parker 243 (B)	1 0	def	Adam Hunt 208 (W)	½ ½	Richard Webb 211
2 M Ferguson 226	1 0	Jovanka Houska 195	Tim Dickinson 185	½ ½	AP Smith 202
3 B Kelly 222	1 0	KD Smallbone 183	Jochen Wittmann 186	1 0	Gerald Moore 202
4 H Hunt 217	½ ½	DS Tucker 185	Ray Starkie 171	0 1	Jonathan Beedle 184
5 A Cohen 213	1 0	MV Taylor 180	Graham Chapman 172	0 1	RJ Richmond 185
6 A Harley 206	1 0	I Duvall 176	Dave Bruce 166	0 1	RB Edwards 185
7 D Moskovic 204	1 0	JT Munday 175	Phil Vainker 168	½ ½	Hans-Peter Hansen 180
8 D Hassabis 199	1 0	ACP Milnes 170	Nick Jones 166	0 1	Roger de Coverly 173
9 N Regan 194	1 0	MC Bowhay 166	Sean Terry 160	0 1	Majid Mashayekh 173
10 P Crocker 194	1 0	MF Redmond 156	Nick Hepworth 154	½ ½	Malcolm Armstrong 166
11 M Shephard e190	1 0	PR Maul 155	Peter Ball 150	1 0	AG Kelly 165
12 M Thornton 187	½ ½	WP Tickner 154	Allan Short 154	0 1	Matthew George 160
13 def	0 1	P Watkins 152	Mark Cundy 150	0 1	Dave Mansfield e160
14 S Larski 167	½ ½	DJ Lewis 149	Simon King 142	0 1	Stephen Law 156
15 M Campbell 153	½ ½	LD Varnam 124	Stephen Bough 135	½ ½	Andy Huxley 150
16 CJ Howell 152	1 0	Mario Houska 129	George Spalding 117	0 1	Stephen Clark 145
(Cambridge)	13 3		(Long Hanborough)	4½ 11½	

Herts*	28.2.98	Essex*
1 PG Maguire 198	½ ½	AP Lewis 212 (W)
2 SJB Knott 226	1 0	DJ Coleman 204
3 Steve Swanson 201	0 1	DA Sands 204
4 Philip Borman 201	1 0	GJ Moore 207
5 JF Rudge 186	0 1	M Twyble 200
6 SJ Roe 185	1 0	JP Manley 205
7 Andrew Gilfillan 187	0 1	G Kenworthy 200
8 KR Clark 188	1 0	JH Hodgson 196
9 HL Tebbs 182	½ ½	PL Williamson 184
10 JN Fraser-Mitchell 179	1 0	JA Goldberg 178
11 CE Majer 180	½ ½	R Parker 177
12 JR Denton 177	1 0	JC Moore 182
13 D Ross Brennan 175	0 1	RP White 187
14 SJ Tovey 168	1 0	D Kraszewski 183
15 Barry Morris 161	1 0	W Saunders 171
16 DE Bower 159	1 0	I Myall 168
(St Albans)	10½ 5½	

Sussex*	14.3.98	Surrey
1 DH Cummings 208 (B)	1 0	PJ Sowray 213
2 FJ Kwiatkowski 204	0 1	SH Berry 209
3 DB Graham 204	½ ½	RA Allicock 196
4 LE Rutherford 198	1 0	DB Rosen 190
5 GH James 197	½ ½	PD Kemp 187
6 BJ Denman -	1 0	DWW Gunter 190
7 B Cafferty 192	1 0	def
8 M Broom 193	1 0	C Briscoe 171
9 MD Nicholas 187	0 1	PM Stimpson 170
10 SJ Newman 187	1 0	CRA Clegg 168
11 JA Dodgson 179	1 0	MC Page 164
12 PG Farr 179	1 0	PD Dupré 158
13 JC Mansson 178	1 0	RJ Wilcox 152
14 MR Stott 177	1 0	def
15 MO Costley 176	1 0	def
16 RJ Almond 175	1 0	def
(Brighton)	13 3	

Berks*	14.3.98	Oxon*
1 HW Murphy 193 (W)	½ ½	Adam Hunt 208
2 KD Smallbone 184	0 1	Joel Ouaknine 183
3 DS Tucker 187	½ ½	Jochen Wittmann 186
4 PJ Sharp 183	½ ½	Alex Lewis 183
5 I Duvall 176	0 1	Graham Chapman 172
6 JT Munday 175	½ ½	Phil Vainker 174
7 C Purdon 172	0 1	Ray Starkie 171
8 IR Henderson 170	½ ½	Dave Bruce 166
9 ACP Milnes 170	1 0	Lester Millin 167
10 MW Marlow 165	½ ½	Sean Terry 160
11 PS Janota 168	1 0	Mark Cundy 150
12 J Townsend 167	1 0	Peter Ball 150
13 MC Bowhay 166	1 0	Will Burt 149
14 MF Redmond 156	1 0	Soo Chuen Tan 142
15 PR Maul 155	1 0	Wayne Tutty 123
16 DJ Lewis 149	½ ½	Tony Heslop 122
(Newbury)	9½ 6½	

Essex*	14.3.98	Kent*
JW Rogers 217 (B)	½ ½	Neil McDonald 237
AP Lewis 212	½ ½	Danny Gormally 225
DA Sands 204	½ ½	James Vigus 215
G Moore 207	½ ½	Andrew Mack 202
M Twyble 200	½ ½	Alan Hanreck 201
JP Manley 205	½ ½	John Naylor 201
G Kenworthy 200	0 1	Lyndon Gurr 201
JH Hodgson 196	½ ½	David Farndon 194
D Sherman 191	½ ½	John Wager 193
P Williamson 187	0 1	Peter Taylor 191
MC Rich 183	½ ½	Paul O'Donovan 190
J Goldberg 178	½ ½	Nathan Alfred 190
R Parker 177	0 1	Alexis Harakis 188
RP White 187	½ ½	Chris Howell 186
JC Moore 182	0 1	Iain Galloway 184
W Saunders 171	0 1	Nigel Donovan 181
(Wanstead House)	5½ 10½	

"This is the first match I can recall where no Essex player contrived a win. This recall goes back to the mid-1950s!" - Essex mc. It *must* be quite rare for a county team to score 34% and not win a game.

Bucks*	15.3.98	Herts*
Richard Webb 211 (B)	0 1	Simon Knott 226
Andrew P Smith 202	0 1	Steve Swanson 201
Jonathan Beedle 184	½ ½	Jerry F Rudge 186
Robert J Richmond 185	½ ½	Kevin R Clark 188
RB Edwards 185	1 0	def
Hans-Peter Hansen 180	½ ½	Howard L Tebbs 182
Roger de Coverly 173	½ ½	JN Fraser-Mitchell 179
Majid Mashayekh 173	½ ½	Chris E Majer 180
AMJ Robbings 172	0 1	John R Denton 177
Malcolm Armstrong 166	1 0	D Ross Brennan 175
Matthew George 160	0 1	Philip J Gregory 169
Dave Mansfield e160	1 0	Barry Morris 161
WEC Hughes 156	1 0	David E Bowey 159
Adrian Laurence 146	½ ½	John Cook 158
Brian Atkinson 150	½ ½	Steven Weston 150
Andrew J Hughes 127	0 1	Christopher Lorisa 147
(Slough)	7½ 8½	

Heard from an SCCU county, not necessarily about anything in this issue:

"The whole afternoon represented an object lesson by [the home side] in how not to organise a county chess match. Play got under way ten minutes late, and would have been even further delayed had the away players not set up much of the equipment. There were no score sheets provided, but fortunately the [away] captain had an emergency stock with him. There were also no refreshments, although honourable mention should be made of some of the [home] team who left the premises during play to bring back teas or coffees for their opponents.. it should not have been left to the away captain to bring back a tin of biscuits from the local Co-op. The match was played in a room with an even squeakier floor than that at the 1997 British Championships at Hove. When three fire tenders arrived.. in mid-afternoon, one began to suspect that there was some form of curse on the proceedings."

Ed: - The home side also defaulted some games, without notice, but we won't say how many or everyone will be looking for their deerstalkers. Squeaky floor and a local Co-op will have set some of you off already.



## UNDER 175

Surrey*	24.1.98	Sussex	Surrey*	7.2.98	Essex*
1 RK Thomas 174 (B)	1 0	PA Batchelor 168	RK Thomas 174 (W)	0 1	AR Brett 173
2 DR Sedgwick 173	1 0	AO Pickersgill 169	DR Sedgwick 173	0 1	TD Coote 173
3 C Briscoe 171	0 1	MJ Reddie 168	Mauthew Broomfield 171	0 1	Tim Hebbes 174
4 D Malcolm 169	1 0	ASJ Fleming 168	Chris Briscoe 171	½ ½	Roy Heppinstall 170
5 CRA Clegg 168	1 0	IG Kelly 167	David Malcolm 169	½ ½	LE Marden 169
6 JS White 165	½ ½	A Hall 163	CRA Clegg 168	1 0	George McNally 172
7 MC Page 164	0 1	E Pesonen 163	JS White 165	1 0	WL Saunders 171
8 RGR Harris 164	0 1	AH Palmer 155	ME Page 164	½ ½	KW Clow 173
9 KP Mynett 162	½ ½	PR Selby 153	S Macdonald-Ross 162	0 1	DJ Millward 168
10 STK Wilkinson 139	0 1	P Greaves 150	KFH Inwood 160	½ ½	ID Hunnable 166
11 A Andrews 161	1 0	DG Ratcliffe 150	Neil Maxwell 160	0 1	IBN Smith 161
12 K Inwood 160	1 0	L Rackham 142	PD Dupré 158	0 1	CR Ramage 167
13 PD Dupré 158	½ ½	LJ Cannon 131	ND Grey 156	½ ½	Les J Crane 164
14 HT Jones 152	½ ½	TJ Woods 139	RJ Wilcox 152	0 1	RE Waldteufel 163
15 RJ Wilcox 152	0 1	RD Hirsch 139	PR Archer 151	0 1	NH Twitchell 160
16 FC Manning 133	1 0	def	STK Wilkinson 139	1 0	AD Hartland 160
(Sutton)	9 7		(Sutton)	5½ 10½	

Essex*	21.3.98	Sussex	Surrey*	21.3.98	Kent
1 Trevor D Coote 173 (W)	1 0	Andrew SJ Fleming 168	RK Thomas 174 (W)	½ ½	DJR Barnes 173
2 Tim Hebbes 174	1 0	AO Pickersgill 169	DR Sedgwick 173	1 0	def
3 Larry E Marden 169	½ ½	Michael J Reddie 168	D Malcolm 169	0 1	S Pullinger 169
4 George McNally 172	0 1	Paul A Batchelor 168	CRA Clegg 168	0 1	AN Kissoon 163
5 William L Saunders 171	1 0	SON Hawes 168	MC Page 164	1 0	R Everson 165
6 Martin McCall 171	½ ½	Ian G Kelly 167	RGR Harris 169	0 1	S Jacob 161
7 Ivan J Myall 171	1 0	Arthur Hall 163	S Macdonald-Ross 162	1 0	M Brougham 159
8 David J Millward 168	½ ½	Paul R Selby 153	A Andrews 161	1 0	J Lewin 156
9 Ivor BN Smith 161	1 0	Philip Greaves 150	AN Smith 156	1 0	def
10 Ken W Clow 173	½ ½	Paul Watson 147	A James 155	½ ½	R Winterburn 153
11 Colin R Ramage 167	½ ½	LJ Cannon 131	RJ Wilcox 152	1 0	P Wood 151
12 Ian D Hunnable 166	1 0	R Daniel Hirsch 139	PE Barnard 141	1 0	P Eldridge 146
13 Les J Crane 164	1 0	RC Grundy 127	K Mehendale 132	½ ½	I Hames 140
14 Roberto E Waldteufel 163	½ ½	David J Cork 114	FC Manning 133	½ ½	A Habibi 107
15 Neville H Twitchell 160	1 0	def	(Sutton)	9 5	
16 Mark Weighell 161	1 0	def	Boards 15 and 16 double-defaulted		
(Wanstead House)	12 4				

## UNDER 150

Surrey*	31.1.98	Kent	Herts	31.1.98	Middx*
1 Colin Parker 146 (W)	0 1	Cosmo Charles 149	Oliver Lenton 149	0 1	R Aw 148 (W)
2 Charles Fellows 146	½ ½	Andy Heard 148	Bryan (so) Judkins 148	1 0	M Williams 146
3 John Nyman 146	½ ½	Roy Parsons 148	Christopher Lovisa 147	1 0	C Fewtrell 146
4 Ian McLeod 145	½ ½	Mike Wiltshire 148	Roger Lever 147	0 1	Y Tello 145
5 Rod Bell 143	½ ½	Mark Finch 146	Lorin D'Costa 141	0 1	G Brown 143
6 John Marshall 141	0 1	Andrew Mata 146	Ronald Hughes 144	0 1	A Fulton 140
7 Paul Barnard 141	½ ½	Alan Sherriff 146	John Coles 143	1 0	B Haase 140
8 John Hawson 140	0 1	Kerry Kingston 146	Karl Hardy 140	½ ½	K Morris 140
9 Kevin Wilkinson 139	1 0	Derek Davis 145	John Marshall 141	½ ½	N Tomkin 139
10 Don Baldock 135	0 1	Simon Moate 142	Ian Mutton 137	0 1	P Kennelly 138
11 Fred Manning 133	0 1	Peter Titmas 139	Anthony (so) Hall 136	½ ½	BA Tysoe 137
12 Krishna Mehendale 132	½ ½	Stephen Casement 137	Mir M Wali 136	0 1	G McLeod 136
13 Dennis Rattray 127	1 0	Ian Hames 140	Colin Kidd 136	0 1	CICH Wallace 133
14 Jim Hale 127	0 1	Steven Chick 128	Simon Charles 132	1 0	E Larkman 129
15 Howard Curtis 126	0 1	Peter Childs 128	Dave Young 133	1 0	P Tabberer 118
16 Chris Goode 123	0 1	Mike Jones 121	Thomas Wright 128	1 0	K Parr 108
(Sutton)	5 11		("Nicholas Breakspear School") 7½ 8½		

Sussex*	14.2.98	Herts	Essex*	14.2.98	Surrey*
1 L Rackham 142 (B)	½ ½	N Rughwani 149	John White 147 (B)	½ ½	Colin Parker 146
2 DL Roberts 148	½ ½	O Lenton 149	Stephen M Williams 147	1 0	Charles Fellows 146
3 WH Partridge 148	½ ½	AP Primett 149	Thomas G Winter 147	0 1	John Nyman 146
4 IK Edgson 144	½ ½	BD Judkins 148	Keith S Jones 146	1 0	Ian McLeod 145
5 PN Kington 143	0 1	C Lovisa 147	David J Rawlings 136j	0 1	Paul Barnard 141
6 K Davies 143	1 0	def	def	0 1	Kevin Wilkinson 139
7 LJ Cannon 131	1 0	def	Tony Drake 145	0 1	Don Baldock 135
8 TE Rendle 132	½ ½	J Coles 143	Laurie J Burt 144	0 1	Fred Manning 133
9 TJ Woods 139	½ ½	P Lawrence 143	Mike J Cresswell 143	½ ½	Krishna Mehendale 132
10 EJ Hillier 138	½ ½	J Marshall 141	Philip Zammit 138	1 0	def
11 RD Hirsch 139	0 1	K Hardy 140	David FC Bird 133	1 0	Jim Hale 127
12 CC Dunn 132	0 1	A Hall 136	Ian MacLachlan 131	1 0	Howard Curtis 126
13 PH Benson 129	½ ½	MM Wali 136	Barry Sheppard 130	0 1	David Hodgson 124
14 RC Grundy 127	0 1	DP Young 133	David G Cannan 128	1 0	def
15 RA Clement 128	½ ½	D Price 134	Carlton Barrett 123	0 1	Neil Clifton 106
16 JL Bryant 89	1 0	TC Wright 128	Iain Gunn 116	1 0	Alexandra Kelly 85
(Brighton)	7½ 8½		(Wanstead)	8 8	

## UNDER 125

Middx*	14.3.98	Sussex*	Oxon*	31.1.98	Essex*
1 R Aw 148 (B)	½ ½	L Rackham 142	I Brooke 122 (B)	0 1	M Bradford 123
2 M Williams 146	1 0	DL Roberts 148	A Heslop 122	1 0	C Barrett 123
3 P Staneland (so) 109 (r)	0 1	WH Partridge 148	A Collins 121	½ ½	R Ianetta (so) 123
4 G Brown 143	1 0	IK Edgson 144	G Spalding 117	1 0	L Trent 120
5 K Dan 142	½ ½	K Davies 143	M Duck 116	½ ½	T Cole 123
6 A Fulton 140	1 0	BJ Izzard 144	A Wyeth 116	½ ½	R Joyce 123
7 K Morris 140	1 0	R Hollinghurst 140	M Brindley 116	1 0	R Payne 118
8 WB Haase 140	1 0	LJ Cannon 131	B Cornes 114	½ ½	W Petchey 116
9 N Tomkin 139	1 0	TJ Woods 139	F Fallon 112	0 1	R Giddens 116
10 W Dennison 139	1 0	EJ Hillier 138	R Langham 111	½ ½	C Turner 113
11 P Kennelly 138	½ ½	RD Hirsch 139	J Booker 103	1 0	D Allen 110
12 BA Tysoe 137	0 1	MR Hickman 131	S Grigson 102	0 1	S Collins 111
13 A Ogannisian 137	1 0	PH Benson 129	D Buckland 96	0 1	M Grieve 106
14 G McLeod 136	½ ½	RA Clement 128	S Booker 96	0 1	P Flint 107
15 G Jordan 131	1 0	def	P Williams 88	1 0	def <sup>1</sup>
16 E Larkman 129	1 0	JL Bryant 89	J Kennedy 87	1 0	P Pattison 97
(Northolt)	12 4		(Long Hanborough)	8½ 7½	

<sup>1</sup> Oxon name a player; Essex say "default".

Surrey*	24.1.98	Sussex*	Kent*	14.2.98	Oxon*
1 D Hodgson 124 (B)	½ ½	A Bradbury 124	M Jones 121 (B)	0 1	I Brooke 122
2 D Rees 123	½ ½	C Power 120	R Springett 122	½ ½	T Frost 121
3 C Goode 123	0 1	P Helliwell 120	RC Fenn 123	½ ½	A Collins 121
4 D Weston-Lewis 121	½ ½	M Plumb 115	G Battye 115	0 1	G Spalding 117
5 K Boztas 120	1 0	M Bryant 117	N Lister 114	0 1	M Brindley 116
6 D Howes 104 (r)	½ ½	S Deere 117	D Picton 113	1 0	J Wyeth 116
7 M Daood 111	0 1	P Burgis 120	W Stock 115	0 1	M Duck 116
8 T Chase 114	1 0	P Dezzani e115	PD Poland 109	0 1	B Cornes 114
9 D Ramsey 115	½ ½	CJ Parker 117	IB Bryan 108	1 0	Z Marham 110 <sup>2</sup>
10 H Wylie 114	½ ½	D Simpkins 107	K Sanders 104	½ ½	R Langham 111
11 J Xuereb 116	0 1	M Curtis 116	I Stoneman 104	½ ½	F Fallon 112
12 D Innes 115	½ ½	I Phillipson (so) 115 <sup>1</sup>	R Thompson 101	0 1	J Booker 103
13 K Lovell 114	1 0	P Buswell 106	J Robertson 97	½ ½	D Buckland 96
14 C Dixon 105	½ ½	M Moore 106	AP Fabian 97	1 0	S Booker 96
15 G Morse 106	1 0	E Lamb 96	T Hogg 94	0 1	P Williams 88
16 P Battersby 96	0 1	J Bryant 89	AT Taylor *90	½ ½	D Metcalfe 108
(Sutton)	8 8		(Charlton House)	6 10	

<sup>1</sup> Bd 12: corrected to 114 in August supplement (if it is Philipson). Noticed afterwards, by accident, that Burgis (bd 7) is also a point too high, and for the same reason. The Bulletin has done no systematic check. Sussex grades, here and elsewhere, are as supplied by the match captain(s).

Herts*	7.2.98	Surrey*	Kent*	21.3.98	Herts
1 def (B)	0 1	D Hodgson 124	MR Jones 121 (B)	0 1	L Noble 121
2 def	0 1	J McGing 123	RC Fenn 123	1 0	S Collins 123
3 C Byrne 117	1 0	D Weston-Lewis 121	G Battye 115	0 1	C Byrne 117
4 J Leake 123	0 1	C Goode 123	N Lister 114	0 1	L Roche 122
5 T Lowson 112	0 1	A Hunt 122	D Picton 113	½ ½	T Lowson 112
6 T Simms (so) 112	1 0	M Daoood 111	W Stock 115	0 1	T Sims 112
7 P Laskier 117	1 0	T Chase 114	PD Poland 109	0 1	K Griggs e120
8 J Lanaway 118	½ ½	D Ramsey 118	IB Bryan 108	0 1	P Laskier 118
9 M Barnes 121	1 0	H Wylie 114	K Sanders 104	0 1	M Barnes 121
10 J Moore 110	0 1	K Lovell 114	ID Stoneman 104	1 0	T Berg 110
11 G Halsall 108 <sup>1</sup>	0 1	D Howes 104	IC Smith 104	½ ½	T Lanaway 118
12 G Lunn 106	1 0	J Pol 108 <sup>2</sup>	JR Thompson 101	0 1	J Moore 110
13 R Morris 106	0 1	G Morse 106	J Robertson 97	0 1	D Marchand 109
14 N Belinfante 109	½ ½	K Hosea	AP Fabian 97	½ ½	G Lunn 106 <sup>1</sup>
15 R Claret 103	1 0	R Morgan 90	KE Hendrikse 97	0 1	R Morris 106
16 QA Latif 104	1 0	B Williamson 85	T Hogg 94	½ ½	G Halsall 108
(St Albans)	8 8		(Charlton House)	4 12	

<sup>1</sup> Bd 11: we deciphered this name by getting a list of everyone graded 108, and browsing. <sup>2</sup> Bd 12: same here. Fancied Pog, but Pol it was.

Sussex*	28.2.98	Herts*	Sussex*	21.3.98	Oxon
1 HW Osborne 122 (B)	1 0	L Noble 121	A Bradbury 124 (W)	0 1	W Tutty 123
2 Roy K Hunt 118	0 1	Steven Collins 123	P Helliwell 120	½ ½	I Brooke 122
3 Anthony Bradbury 124	0 1	CJ Byrne 117	M Plumb 115	0 1	A Heslop 122
4 PJ Helliwell 120	½ ½	JA Leake 123	C Power 120	½ ½	A Collins 121
5 Con Power 120	0 1	T Lowson 112	M Bryant 117	1 0	T Frost 121
6 Michael Plumb 115	1 0	TJ Sims 112	C Parker 117	½ ½	G Spalding 117
7 MA Bryant 117	1 0	K Griggs e120	P Dezzani e116	½ ½	M Duck 116
8 JA Povey 114	0 1	P Laskier 117	M Curtis 116	0 1	Z Marham 111
9 David Simpkins 107	0 1	Matthew Barnes 121	D Simpkins 107	½ ½	D Metcalfe 108
10 Michael Curtis 116	0 1	TE Berg 110	G Cox 105	0 1	J Buchanan 105
11 Ian Philipson 115	½ ½	ARC Humphreys 113	J Bryant 89	1 0	J Booker 103
12 John Bryant 89	1 0	J Moore 110	P Buswell 106	1 0	P Staniland 102
13 Matthew Moore 106	0 1	QA Latif 104	T Pepper 99	1 0	S Grigson 102
14 G Cox 105	1 0	G Lunn 106	S Carter 75	1 0	D Buckland 96
15 T Pepper 99	0 1	RE Morris 106	W Avery 58	½ ½	C Kerrigan 96
16 N Pestelle 98	½ ½	G Halsall 108	M Shorrocks e33	0 1	C Morris 77
(Bognor Regis)	6½ 9½		(Crawley)	8 8	

#### UNDER 100

Herts*	31.1.98	Middx*	Middx*	7.2.98	Surrey*
1 Michael Brooks 98	1 0	T Rowland 99 (B)	T Rowland 99 (B)	½ ½	John Darling 98
2 Robert Huhn 98	½ ½	WGV McLaughlin 97	WGV McLaughlin 97	0 1	Laila Tillett 98
3 Stuart Tinsley 98	0 1	Keith Grice 97	Keith Grice 97	1 0	def
4 Kris Devoti 95	1 0	Derek Birt 96	Derek Birt 97	0 1	Bartek Jablonski 91j
5 Keith Sears 96	1 0	Stephen Banks 93	Giovanni Vasco 94	½ ½	Richard Davey 96
6 Nick Chandler 95	1 0	Barry Miles 93	Stephen Banks 93	1 0	David Briscoe -
7 Peter Tuck 95	1 0	Larry McDonagh <sup>1</sup> 93	Barry S Miles 93	1 0	Fred Bleasdale 92
8 Rees Gates 90	½ ½	Phil S Humphry 92	John Revolta 93	1 0	Bernard Sweetman 89
9 Frank Batchelor 88	1 0	Anthony Cook 86	Larry McDonagh 93	1 0	John Barrow 78j
10 Alan Dowling	½ ½	Ted Bradley 83	Ted Bradley 83	1 0	Chris Manders 78j
11 David Wong	½ ½	Cliff W Aylett 76	def	0 1	Graham Curtis 79
12 Mark Senn	1 0	Graham Snow 76	Graham Snow 76	1 0	David Manders 73j
(St Albans)	9 3		(Durham Castle)	8 4	

<sup>1</sup> Bd 7: we've been spelling this McDonagh/. Presumably because match captains have (Herts one does). Middx have lost the l, and the grading list agrees. Our version doesn't print much of a space between the MCDONAGH and the L (no arry). The new all-singing-all-dancing list will use mixed case. "Won't it, Chris?", we said, and he said yes!!!

Surrey*	21.2.98	Herts*	Essex*	21.3.98	Surrey*
1 Oliver Wilson 99 (W)	0 1	Richard Player 99	John Sneesby 98	½ ½	Alec Palmer 99
2 John Darling 98	1 0	Keith Sears 96	Katie Bates 98	0 1	Jesse Gilbert 91
3 Laila Tillett 98	0 1	Nick Chandler 95	Julian Winkworth 98	1 0	Oliver Wilson 99
4 Nick Bawden 93	1 0	Peter Tuck 95	Graham Walker 96	1 0	Laila Tillett 98
5 Harvey Murray-Smith 96	1 0	Des Wasik 92	Josiah Lutton 96	1 0	Nick Bawden 93
6 Lana Boztas 93	1 0	Rees Gates 90	Michael Bridger 95	1 0	Bartek Jablonski 91
7 Richard Davey 96	1 0	Frank Batchelor 88	Ron Prickett 95	½ ½	Harvey Murray-Smith 96
8 David Briscoe -	1 0	John Mackenzie 89	Stewart Trent 93	0 1	Richard Davey 96
9 Fred Bleasdale 92	0 1	Alan Dowling -	Alan Trent 78	0 1	David Briscoe -
10 David Wallis 91	1 0	Mark Senn -	John Marsh 77	0 1	Fred Bleasdale 92
11 Bernard Sweetman 89	1 0	Alan Brewis 71	Heather Walker 77	1 0	Andrew Foster-Yeow 88
12 Graham Curtis 79	0 1	Stephen Burt	Edward Morris 77	½ ½	John Barron 82
(Sutton)	8 4		(Southend)	6½ 5½	

White Richard Bates, Black Gavin Wall. Best Game,  
Richmond Rapid 1.3.98

1.d4 f5 2.Nc3 d5 3.e4 dxe4 4.Bf4 Nf6 5.f3 Nc6 6.fxe4 fxe4  
7.Bb5 Bg4 8.Nge2 e6 9.h3 Bh5 10.g4 Bg6 11.Bg5 Be7  
12.Nf4 0-0 13.Nce2 Nd5 14.Nxe6



Black to play

14...Bxg5!! (or maybe the exclamation marks belong with  
move 17?) 15.Nxd8 Bh4+ 16.Kd2 Bg5+ 17.Ke1 Raxd8  
18.Bc4 Ncb4 19.h4 e3 20.Bb3 Be4 21.Rh2 Rf2 22.Rxf2 Bxh4  
23.a3? ("losing a vital tempo. 23 Kf1 exf2 24 Rc1 looks  
unclear.") exf2+ 24.Kf1 Nxc2 25.Qc1 Nxa1 26.Qxa1 Kh8  
27.Qc1 Rf8 28.Bxd5 Bxd5 29.b3 Bg5 30.Qb1 Bh4 31.Nc3  
Re8 0-1

#### Quotes

"West End 5 0 Bolton did not enter." - A National Club  
result.

"Notice is given that the Finance Council meeting will be  
at the Queen's Hotel, Leeds, starting at 1:30 pm." -  
BCF ChessMoves.

*And he kept a straight face while he said it*

"Tony Suttill, Director of Management Services, would  
like to remind ChessMoves readers that Direct Members  
and Delegates to Council are entitled to attend  
Management Board meetings as observers."

#### CONGRESS DIARY

- Apr 7-8 MAIDENHEAD JUNIOR U18,13,11,9. R Brugge, 16 Wootton Way, Maidenhead, Berks SL6 4QU  
01628 636276
- 10-13 SOUTHEND OPEN BCQ incorporating SCCU Individual Championship. FIDE rated. Plus 5-rd Swisses  
in graded sections. Howard Grist, 124a Oakleigh Park Drive, Leigh on Sea, Essex SS9 1RU.  
Telephone enquiries to George Smith 01702 556086
- 10-13 SURREY CONGRESS at Sutton. FC Manning, 44 Willow Rd, Wallington, Surrey SM6 0PF 0181 647  
0063
- 18 GOLDERS GREEN RAPIDPLAY. Adam Raoof, 21 Golderton, Prince of Wales Close, Hendon, London  
NW4 4QZ
- 25 ST OLAVES at Orpington. Open; U14/11. St Olaves Chess Club, St Olaves School, Goddington Lane,  
Orpington, Kent BR3 9SH; or phone Nathan Alfred 0181 650 3939
- 26 RICHMOND RAPID. Open; U160/120/80. Stephen Mooring, 65 Lincoln Avenue, Twickenham TW2  
6NH 0181 893 8003
- 26 TONBRIDGE JUNIOR U18,16,14,12,10,8. RJ Haddrell, 48 Southview Rd, Tunbridge Wells, Kent TN4  
9BX 01892 532361
- May 9 GOLDERS GREEN RAPIDPLAY. Adam Raoof, 21 Golderton, Prince of Wales Close, Hendon, London  
NW4 4QZ

ACKNOWLEDGMENTS: 4NCL Bulletins for November and January; Chessex for February/March; Surrey Girls  
Newsletter for February